

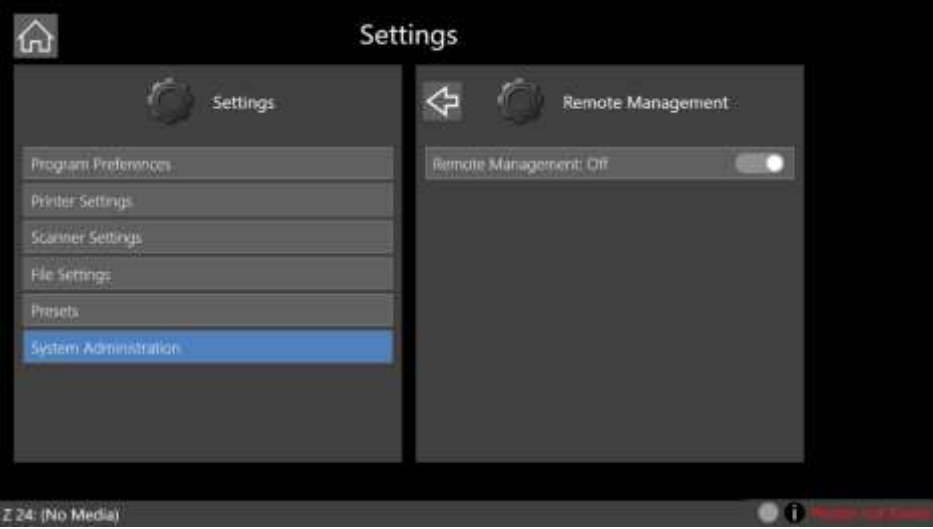
Colortrac	Z series Scanner: Remote management setup and behaviour	Document number UG16004-2
Date: 19/02/2026		

Approval	F v Dinther
Product	Z series scanners with GSC715x System Controllers
Version	From SmartWorks MFP Version 6.4 onwards
New functionality	Offsite management

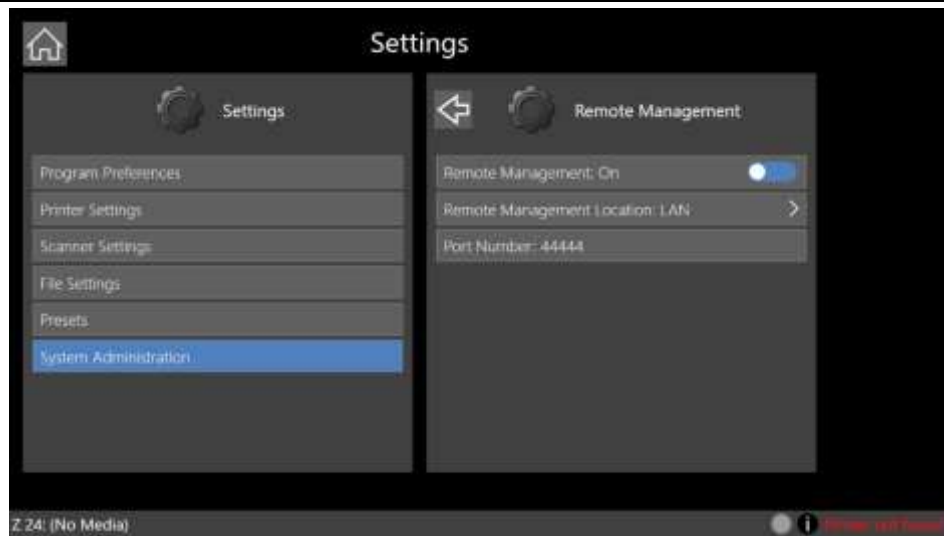
Differences between LAN and offsite remote management

	LAN	Offsite
Data exchange	Using active connection from local PC with the system controller's IP-address	Using a customer definable shared folder
Port used on System Controller	Default 44444 (but configurable)	No inbound ports used
Range	Limited to Local Area Network (same network segment)	Not limited to same network segment

Colortrac	Z series Scanner: Remote management setup and behaviour	Document number UG16004-2
Date: 19/02/2026		

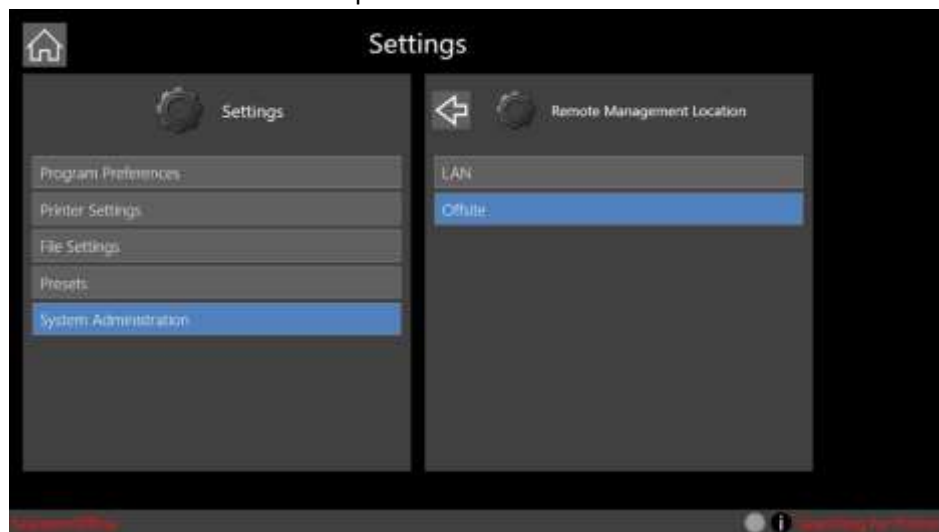
Setup Process	<p>Prerequisites and notes:</p> <ul style="list-style-type: none"> • An administrator User account must be set: go to Settings-System Administration and turn ON User accounts, enter a user name and password for the Administrator. When no User accounts are needed, user Accounts can be set to OFF once the administrator has been set. The administrator User Name and Password are required for the remote admin software to log into the system controller to view and change settings • After setup of Remote Administration, a Reboot is mandatory. • For Offsite: A dedicated shared folder with full access rights needs to be in place and credentials need to be known at setup of Remote Management offline. • Download the Remote Admin Client from www.mfpdownload.com and install this with administrator rights on the remote pc. <p>On the System Controller go to Settings - System Administration – System Settings – Remote management</p>  <p>Set Remote Management to On</p>
----------------------	--

Colortrac	Z series Scanner: Remote management setup and behaviour	Document number UG16004-2
Date: 19/02/2026		



By default, LAN is selected. Reboot the System Controller when LAN is the desired option. (Note – without rebooting the change will not take effect.)

When Offsite is the desired option:



Select Offsite

A screen to enter the Remote Management Location will pop-up.

Colortrac	Z series Scanner: Remote management setup and behaviour	Document number UG16004-2
Date: 19/02/2026		

Remote Management Location

Server	\\192.168.178.22
Subfolder	Remote
User	
Password	
Domain	

OK
Cancel
Test

Enter

- Server name (Instead of the IP-address in some cases also the device name of the host can be used)
- Subfolder name
- User
- Password
- Domain (optional. Only when needed)

Press the test button

Network Connection Passed

OK

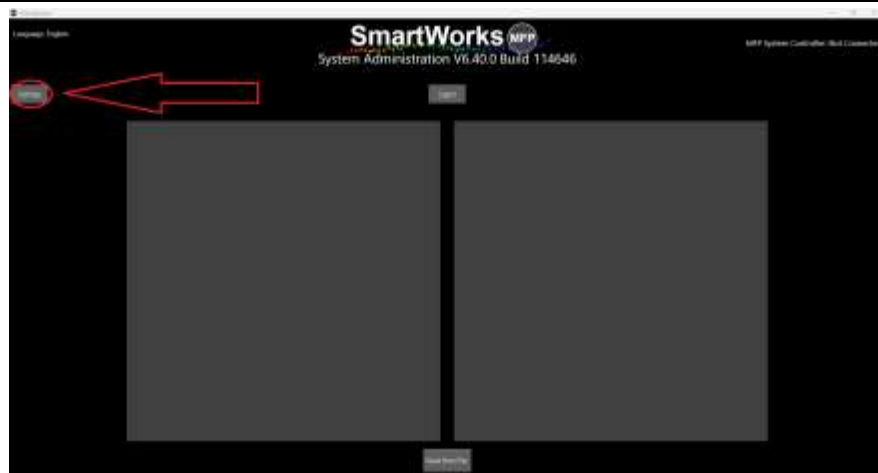
When all credentials are correct and the connection is made the Network Connection Passed message will be visible.

Reboot the System Controller (Note – without rebooting the change will not take effect.)

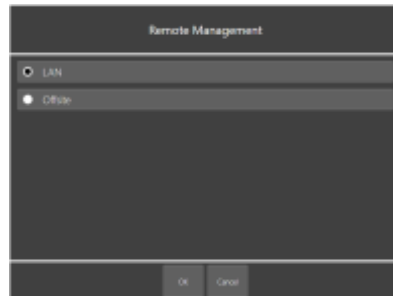
SmartWorksRemoteAdminClient LAN

	Start SmartWorksRemoteAdminClient on the remote pc
--	--

Colortrac	Z series Scanner: Remote management setup and behaviour	Document number UG16004-2
Date: 19/02/2026		



Open settings



Select LAN



Press Logon



Enter the System IP, Port Number, Administrator name and password

Colortrac	Z series Scanner: Remote management setup and behaviour	Document number UG16004-2
Date: 19/02/2026		



Press Read from MFP System Controller



Note: Options to Save to file (backup or export) or read from file (import) are present

Make all required changes and press Send to MFP System Controller.

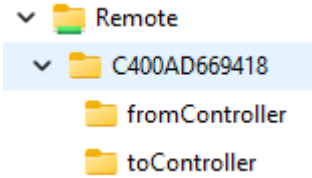
Note: Changes are not immediately applied. (without rebooting some changes will not take effect it is always recommended to reboot the system controller using the software restart from the top left menu.)

Colortrac	Z series Scanner: Remote management setup and behaviour	Document number UG16004-2
Date: 19/02/2026		

SmartWorksRemoteAdminClient Offsite

In offsite mode SmartWorksAdminClient does not read or send information to the System Controller, the data is sent and stored in a shared folder

In the shared folder the folder/file structure is created

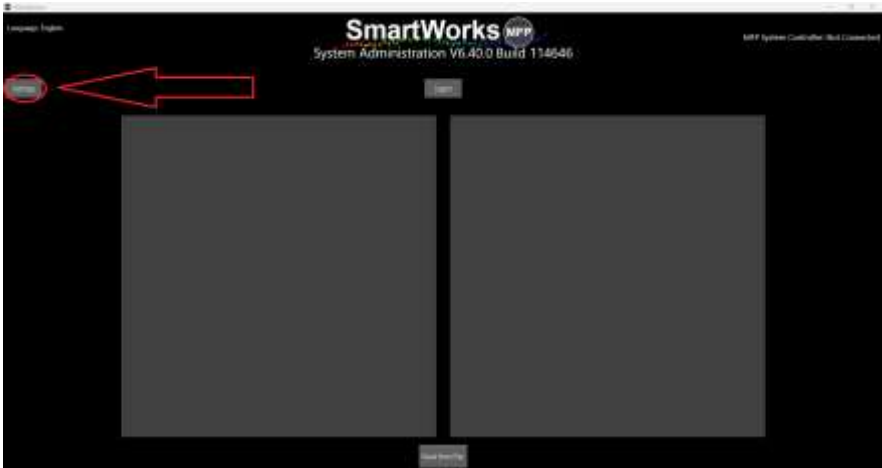


At boot/wakeup of the System Controller the Controller will check if in the toController folder the file savesettingsdata.outdat is present, this file will be copied onto the system controller and the file savesettingsdata.outdat will be deleted the System Controller will store and update settings.


In case of multiple Systems Controllers the Administrator needs to maintain a reference list of the Mac-Addresses. Alternatively the Key operator settings can be used to determine the location and key operator.

The Mac Address can be found on the system controller in the 3 line (top left) menu - about

Start SmartWorksRemoteAdminClient on the remote pc

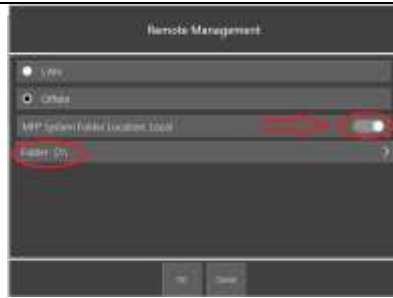


Open Settings

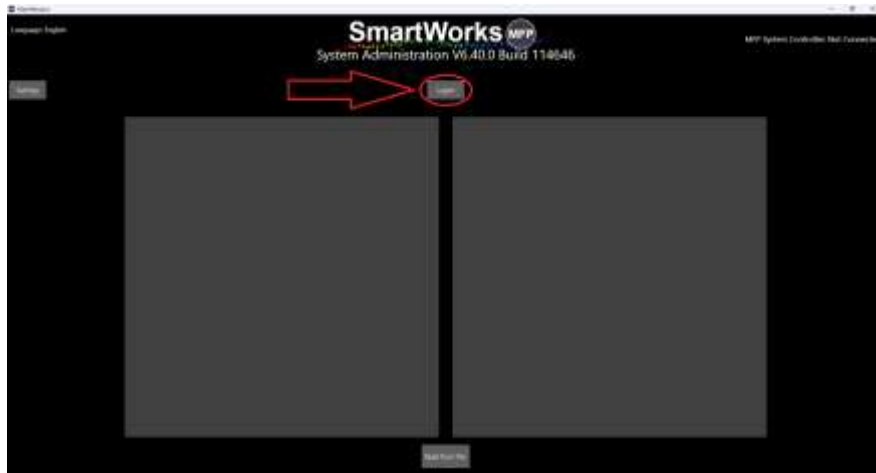


Select Offsite. And fill in the credentials of the Server.

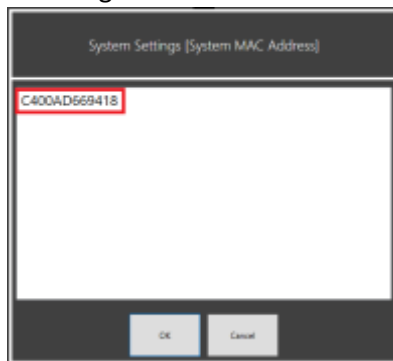
Colortrac	Z series Scanner: Remote management setup and behaviour	Document number UG16004-2
Date: 19/02/2026		



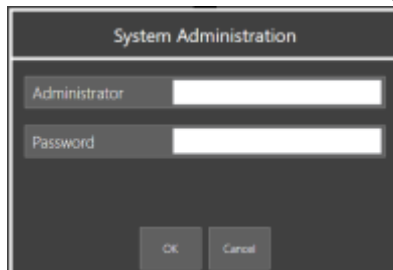
When SmartWorksRemoteAdminClient is installed on the same PC as where the shared folder has been set up the MFP System Folder Location can be set to local



Press logon




Select the MAC-address of the System Controller to administer and press OK



Enter the Administrator and Password

Colortrac	Z series Scanner: Remote management setup and behaviour	Document number UG16004-2
Date: 19/02/2026		



Note: Options to Save to file (backup or export) or read from file (import) are present

Make all required changes and press Send to MFP System Controller.

Note: Changes are not immediately applied. (without rebooting some changes will not take effect it is always recommended to reboot the system controller using the software restart from the top left menu.)